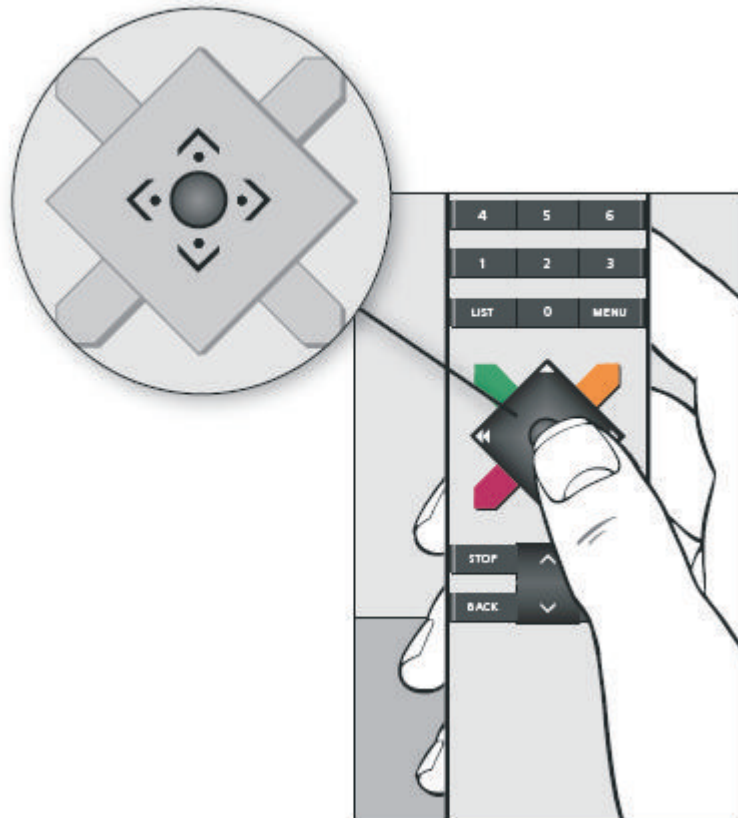
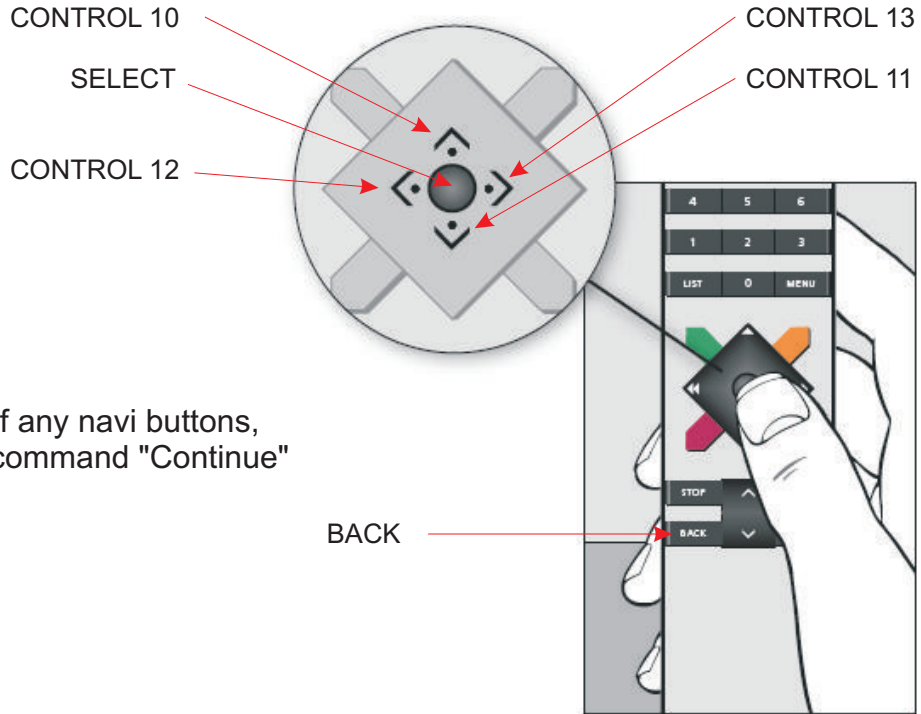


LinTronic

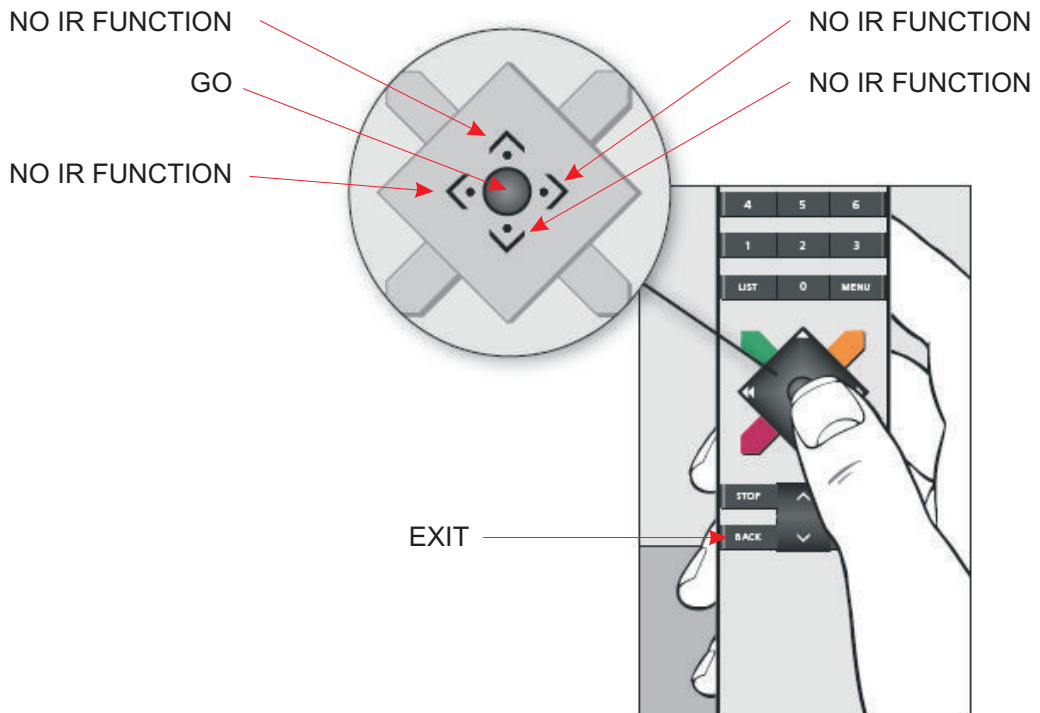
BEO4 NAVI, type 1710



Navi buttons in Mode 1 and Mode 3



Navi buttons in Mode 2 (default)



With the BEO4, type 1710 (at LinTronic we call it BEO4 NAVI), Bang&Olufsen have introduced:

- Relocation of Play, Stop, Text
- Exit is now called Back (LinTronic have already used it like that for a long time)
- Record is now found under List
- Navigation buttons in Mode 2 and 3 (in Mode 1 no codes are transmitted)
- Center button (select) - in Mode 1 same code as Play

By using some of the commands introduced in the BEO5 (initially introduced in the BEO5 to work with the LinTronic RELAY 208), B&O use some of these commands in the BEO4 1710 for new functions:

New functions in LIGHT mode:

- Morning, Outdoor, General, Sleep, Relax, Music, Evening, TV view, Home, Leaving

New sub-mode under TV mode:

- CONTROL

New functions in CONTROL mode:

- On-Off1 to On_Off5, Windows1 to Window5, Curtain1- to Curtain5

--

Some considerations:

Since most of the new functions are in fact old and well-known friends (codes already recognized as FUNCTION_xx and CONTROL_x, and since we want the Configurator to work with all B&O remotes including the BEO5 without too much confusion, we for now have decided to not put specific labels on the FUNCTION/CONTROL commands in Memory Map, but for now we will work with the codes as they are known by the BEO4/BEO5 and later we might improve the reading/understanding of the codes:

LIGHT MORNING = FUNCTION_1
LIGHT LEAVING = FUNCTION_2
LIGHT HOME = FUNCTION_3
LIGHT TV_VIEW = FUNCTION_4
LIGHT EVENING = FUNCTION_5
LIGHT MUSIC = FUNCTION_6
LIGHT RELAX = FUNCTION_7
LIGHT SLEEP = FUNCTION_8
LIGHT GENERAL = FUNCTION_9
LIGHT OUTDOOR = FUNCTION_10

CONTROL WINDOW1 = FUNCTION_1
CONTROL WINDOW2 = FUNCTION_2
CONTROL WINDOW3 = FUNCTION_3
CONTROL WINDOW4 = FUNCTION_4
CONTROL WINDOW5 = FUNCTION_5

CONTROL CURTAIN1 = FUNCTION_11
CONTROL CURTAIN2 = FUNCTION_12
CONTROL CURTAIN3 = FUNCTION_13
CONTROL CURTAIN4 = FUNCTION_14
CONTROL CURTAIN5 = FUNCTION_15

CONTROL ON_OFF1 = FUNCTION_21
CONTROL ON_OFF2 = FUNCTION_22
CONTROL ON_OFF3 = FUNCTION_23
CONTROL ON_OFF4 = FUNCTION_24
CONTROL ON_OFF5 = FUNCTION_25

MODE 1 and MODE 3

NAVI UP = CONTROL 10
NAVI DOWN = CONTROL 11
NAVI LEFT = CONTROL 12
NAVI RIGHT = CONTROL 13
NAVI CENTER = SELECT
BACK = BACK

A long hold of any NAVI buttons, will result in command "Continue".

A long hold of PLAY, will result in command "Continue".

A long hold of the BACK, will result in an "EXIT".

MODE 2 (default)

NAVI UP = NO IR FUNCTION
NAVI DOWN = NO IR FUNCTION
NAVI LEFT = NO IR FUNCTION
NAVI RIGHT = NO IR FUNCTION
NAVI CENTER = GO
BACK = EXIT

Please refer to the B&O manuals on how to add the new functions:
<http://www.bang-olufsen.com/guide/Beo4>

When you add new LIGHT functions, these will be found under LIGHT LIST.

When you add new CONTROL functions, these will be found under TV LIST:
- Find CONTROL and click center button to enter CONTROL MODE.
- Then activate LIST to find new CONTROL functions.

IMPORTANT: Make sure you first add CONTROL in TV mode.

Please observe that CONTROL is a temporary mode (like LIGHT). The BEO will go back to TV mode after a 25 seconds timeout - or if you hit Back.