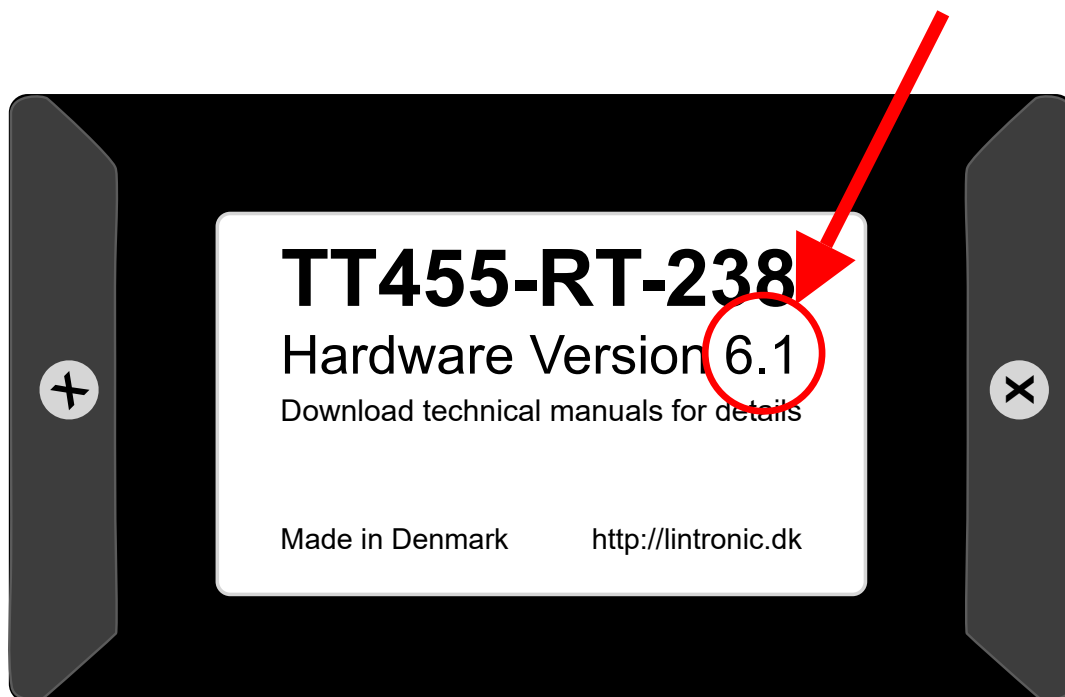


# LinTronic

**IMPORTANT !  
Please follow  
this startup  
procedure.**

Updated: 190122

Please check that we  
have delivered the new  
Hardware version 6.1



Then follow the next  
pages for your first  
firmware update.

The first time your computer connects to the TT455-RT-238, it might detect our production test-firmware version 001.034.046 from 22<sup>nd</sup> February 2011, used to verify that everything works.

This firmware was originally designed for test of hardware version 6.0 (006), but also works for hardware version 6.1 (061).

If firmware is already updated to the the latest version, it is because our support randomly test new units, and you can then skip this document.

**First time only:** If you are asked about an update, then select **NO** and proceed to next page.

Configurator Version: 4.1.0.7

Products Address Computers Commport Startup Database Registration

Connect Address 1

AAA  
Highest creditworthiness  
© Bisnode 2015

LinTronic was rewarded, with the highest credit worthiness AAA. 2014 - 2015 - 2016

[ChangeAddress](#)  
Changes the products address (1-32)  
We allow up to 32 products to cooperate. Products address is default set to 1. You should only change the address, if you want multiple products to communicate.

SIGNAL CONVE

Comma  
Memory  
CodeLe  
Beo5, B  
Easy X  
TT455-P

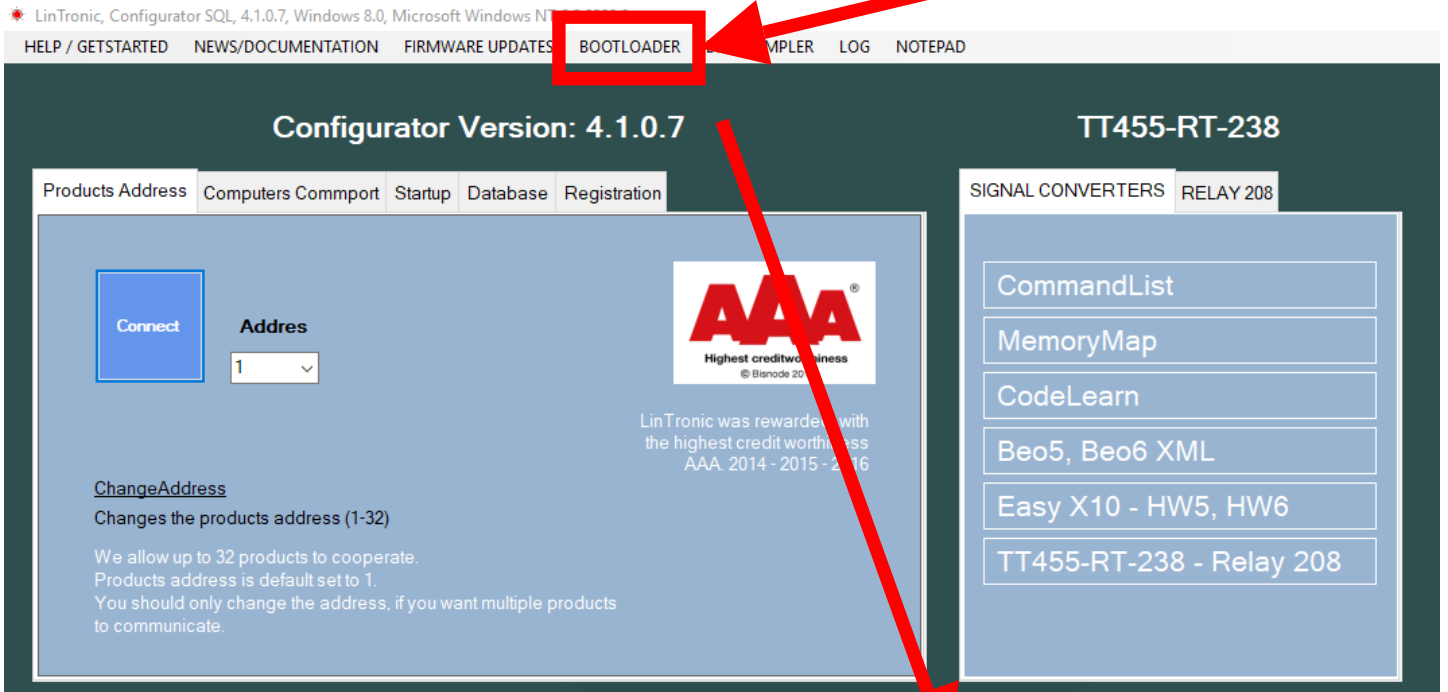
|             |                      |
|-------------|----------------------|
| Transmitted | 0100055001001001014  |
| Received    | 0001055001236        |
| Type        | TT455-RT-238         |
| Hardware    | 006                  |
| Software    | 001.034.046          |
| Date / Time | Feb 22 2011 00:13:43 |

Configurator\_SQL

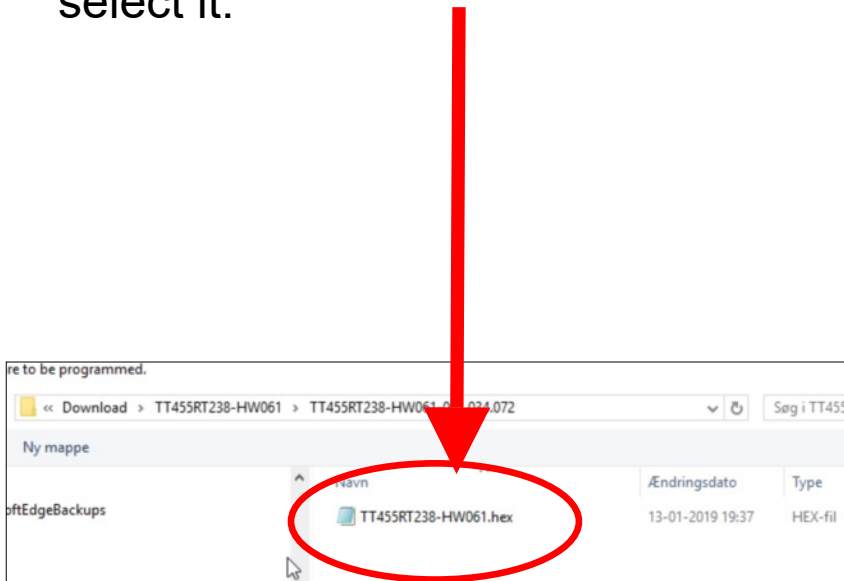
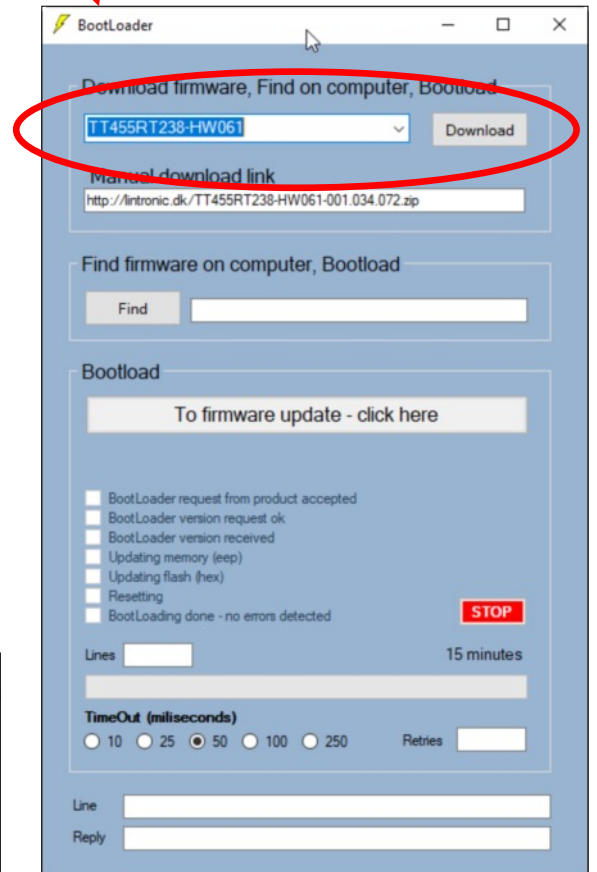
TT455-RT-238 firmware update available, Do you want to update ?

Ja Nej

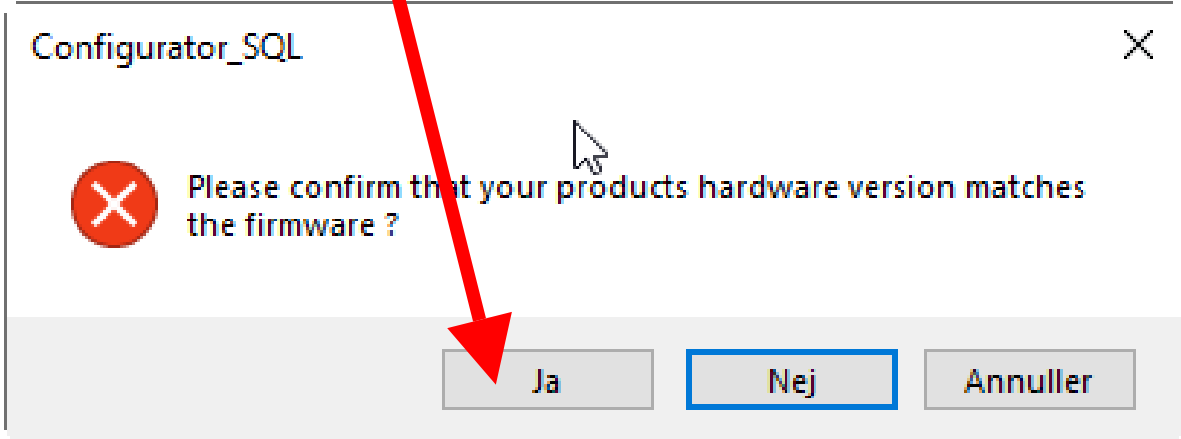
# Click on: BOOTLOADER



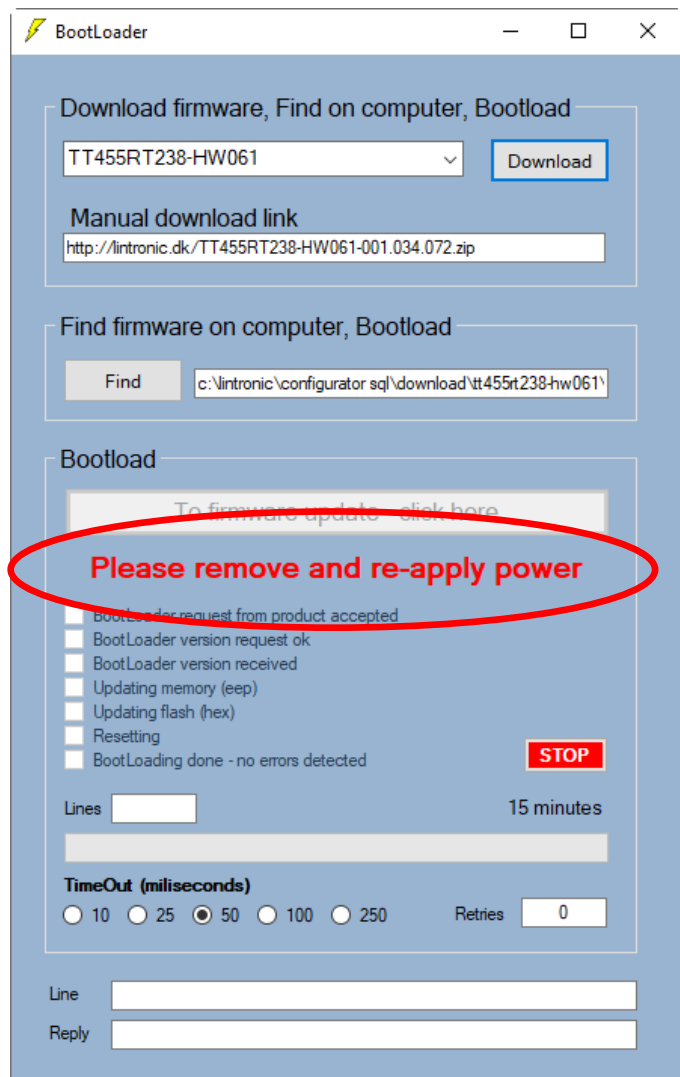
1. select **TT455RT238-HW061**
2. click Download
3. double-click the .hex file to select it.



Click Yes



If update does not start automatically then remove and re-apply power in order to restart the bootloader.



The bootloader will now - during the next 16-20 minutes - update your TT455-RT-238 with the latest firmware.

Leave it running, and it will automatically reboot and reconnect to your TT455-RT-238 and confirm the update.

Next time you connect to your TT455-RT-238, the configurator will check for online updates and let you know if any updates are available.

In the future say Yes to automatic updates.

PS:

The Bootloader is a rock solid part of the product and should always remain intact.

If a firmware update fails for any reason, you should be able to re-load firmware into the product by starting the bootloader manually.

If you experience problems do not hesitate to contact LinTronic.

