

LinTronic

BootLoader

How to firmware update your

LinTronic product

DateRevised

yymmddText

090912 This doc released. We are changing all online-help into PDF files.

171108 Updated to comply with Configurator 4.0.0.89

BootLoader = firmware updater

If you want to update the firmware of your LinTronic product, then the Configurators BootLoader must be used.

A firmware update is normally not needed, unless you know that the latest firmware holds specific features that you want to make use of, or unless LinTronic has recommended or send you an update.

In case you want LinTronic support, we always require that you update to the latest firmware, to make sure we work on the same platform.

When you open the Configurator and establish a communication (Connect) with the LinTronic product, then the Configurator will automatically check for firmware updates, and let you know, whether a new update is available.

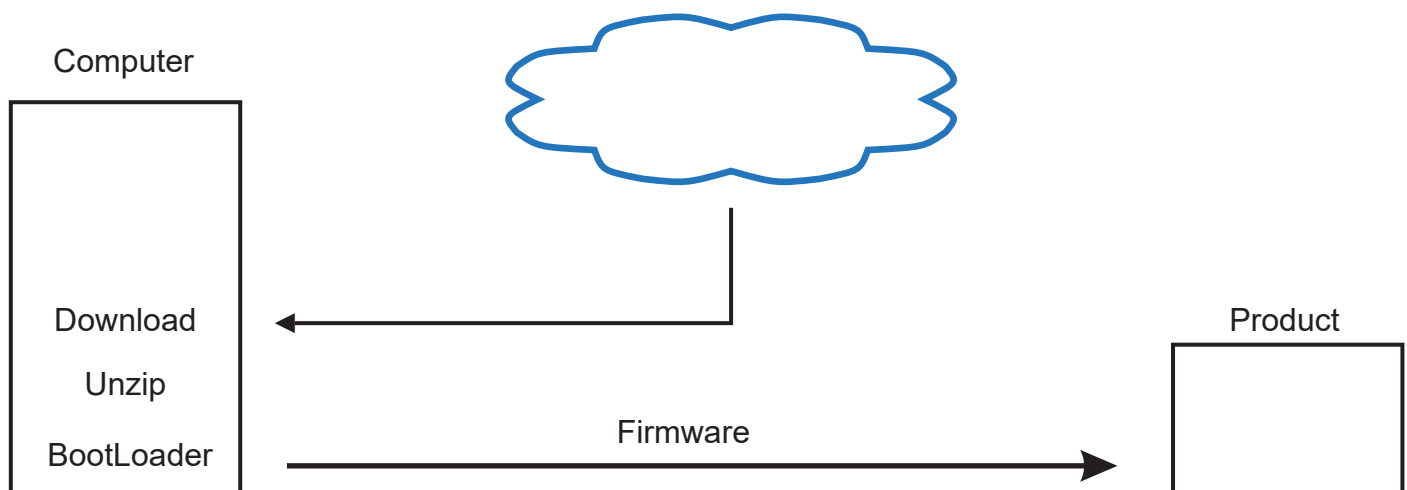
An update consist of two files: A HEX file and an EEP file.

If you download or receive these two files, then they will be zipped into one file and must be saved to a known library and unzipped, before it can be used.

If power to the computer or the product is lost while your are updating with new firmware, then your product most likely no longer be able to establish a normal connection with the computer, however you should still be able to load new firmware.

The BootLoader is not part of the normal program and is normally not corrupted by a power or communication failure.

If you own a product which you cannot establish connection with in the Configurator, then download the wanted firmware from our web-site (Support | Program/Firmware), store and unzip the firmware - and go straight the BootLoader when opening the Configurator.



BootLoader

The image shows a screenshot of the LinTronic Configurator SQL software interface. The main window title is "LinTronic, Configurator SQL, 4.0.0.89, Windows 8.0, Microsoft Windows NT 6.2.9200.0". The menu bar includes "HELP / GETSTARTED", "DOCUMENTATION", "FIRMWARE UPDATES", "BOOTLOADER", "DATASAMPLER", "LOG", and "NOTEPAD". The "BOOTLOADER" menu item is highlighted with a red box, and a red arrow points from it to a separate "BootLoader" configuration window.

The main window displays "Configurator Version: 4.0.0.89" and a navigation menu with "Products Address", "Computers", "Commport", "Startup", "Database", and "Registration". The "Products Address" section features a "Connect" button and an "Address" dropdown menu set to "1". Below this is a "ChangeAddress" section with instructions: "Changes the products address (1-32). We allow up to 32 products to cooperate. Products address is default set to 1. You should only change the address, if you want multiple products to communicate." A logo for "AAA Highest creditworthiness" is also visible.

The bottom of the main window shows a status table:

Transmitted	0100055001001001014	5
Received	0001713000254250005179	30
Type	TT455-RT-238	
Hardware	005	
Software	001.034.060	
Date / Time	nov 8 2017 19:09:23	

The "BootLoader" configuration window has the following sections:

- Download firmware, Find on computer, Bootload:** Includes a dropdown menu and a "Download" button.
- Manual download link:** A text input field.
- Find firmware on computer, Bootload:** Includes a "Find" button and a text input field.
- Bootload:** Features a button labeled "To firmware update - click here".
- Status:** A list of checkboxes for bootloading progress: "BootLoader request from product accepted", "BootLoader version request ok", "BootLoader version received", "Updating memory (eep)", "Updating flash (hex)", "Resetting", and "BootLoading done - no errors detected". A red "STOP" button is located to the right.
- Lines:** A text input field and a "15 minutes" label.
- TimeOut (milliseconds):** Radio buttons for 10, 25, 50 (selected), 100, and 250. A "Retries" text input field is also present.
- Line and Reply:** Two text input fields at the bottom.

BootLoader

Select product to download latest firmware
or
insert download link from website

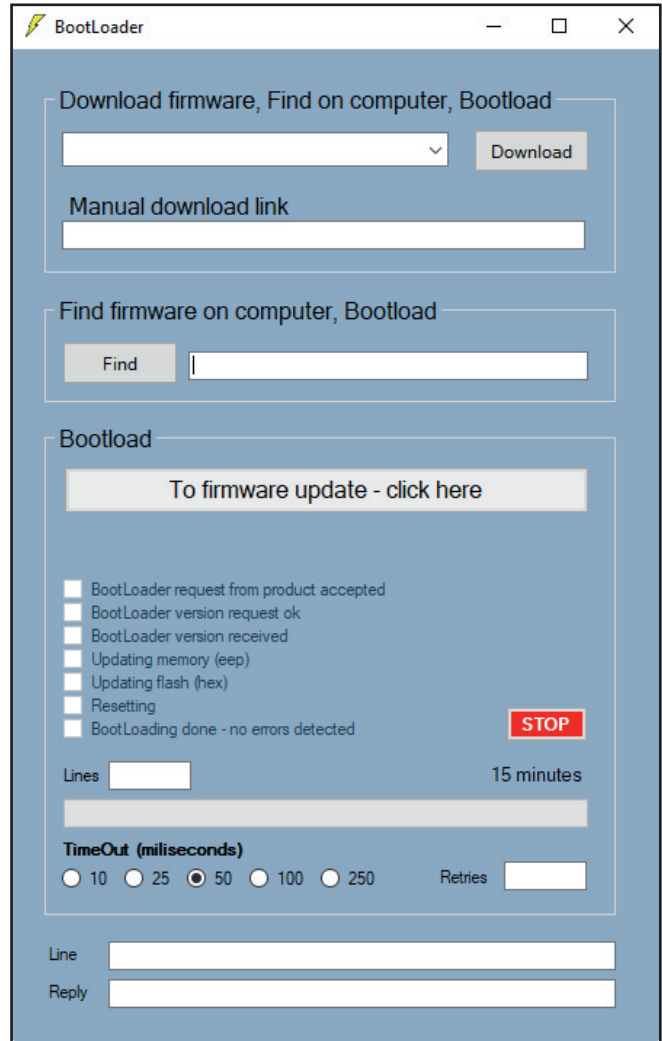
Locate unzipped files
(hex and eep must be in same library)

If update does not start automatically
then click here

update process - steps

update process - bar

update process - communication



BootLoader

LinTronic, Configurator SQL, 4.0.0.89, Windows 8.0, Microsoft Windows NT 6.2.9200.0

HELP / GETSTARTED DOCUMENTATION FIRMWARE UPDATES BOOTLOADER DATASAMPLER LOG NOTEPAD


Configurator Version: 4.0.0.89

Products Address Computers Commport Startup Database Registration

Connect

Address

1 ▾



LinTronic was rewarded, with the highest credit worthiness AAA. 2014 - 2015 - 2016

ChangeAddress
Changes the products address (1-32)

We allow up to 32 products to cooperate.
Products address is default set to 1.
You should only change the address, if you want multiple products to communicate.

Transmitted	0100055001001001014	5	Packages
Received	0001713000254250005179	30	Packages
Type	TT455-RT-238		
Hardware	005		
Software	001.034.060		
Date / Time	nov 8 2017 19:09:23		

When the BootLoader has finished updating the product, the Configurator will automatically connect to the product.