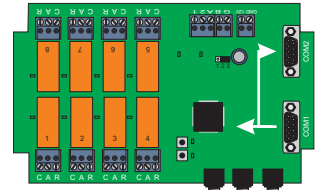


CodeSet 500 - RELAY 208



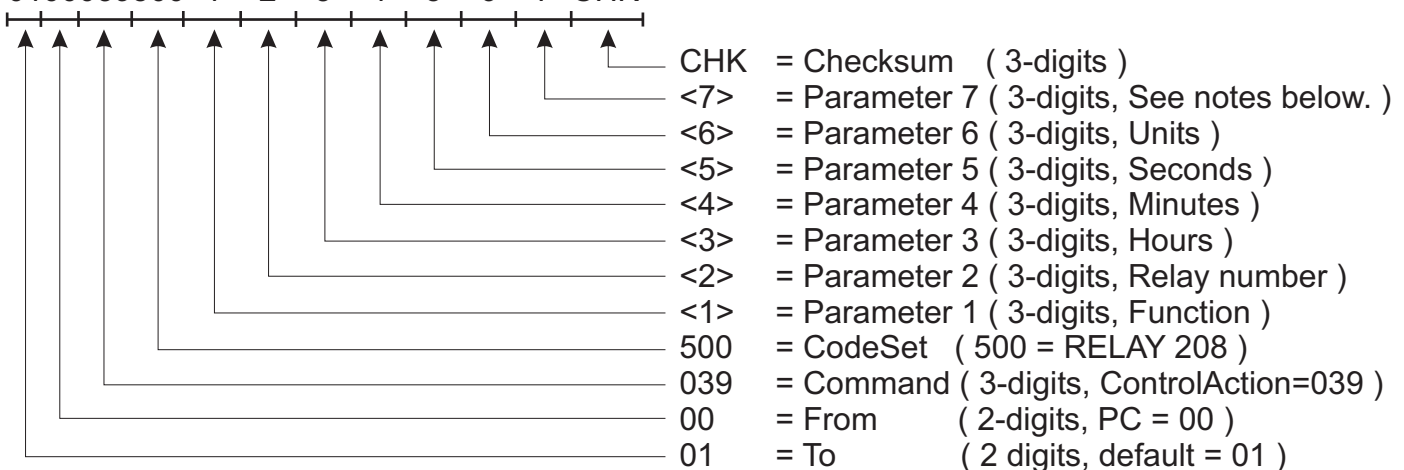
See: Command 039



Command 039 (codeset 500) is used to control a RELAY 208 from the computer.

The CodeSet holds a number of parameters, allowing you to manipulate the timing..

0100039500<1><2><3><4><5><6><7>CHK



NOTE

If you download the RELAY 208 commands from our database, in case you want a TT455-RT-238 to control a RELAY 208, then please observe that the codeset number will be in the range 501 - 533, as the address of the RELAY board is part of the command. When the TT455-RT-238 sends out the wanted codeset, it will subtract 500 from the codeset ID (example 502 - 500 = 2) and then use the result as the RELAY boards address (in this example 2). If address is 33 then the command will be send out as broadcast to all boards.

If you want the RELAY 208 commands to be send out on a different baudrate than the TT455-RT-238, then you can change the REPEAT parameter in your local commands. This is usefull in case you control a RELAY 208 AND a different system/device through the RELAY 208. See last page.

REPEAT

001 = 19200,n,8,1

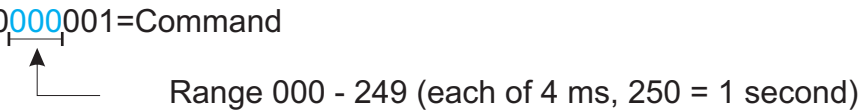
We can add more options if required.

002 = 38400,n,8,1

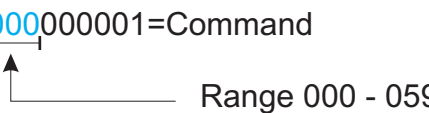
Manipulating the codeset 500

RELAY 208's function = 01-32 up/down.

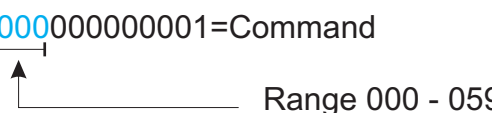
Parameter 6 specifies the Units (4 ms)

50000000000000000000000000000001=Command

 Range 000 - 249 (each of 4 ms, 250 = 1 second)

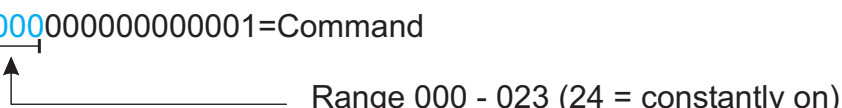
Parameter 5 specifies the Seconds.

50000000000000000000000000000001=Command

 Range 000 - 059

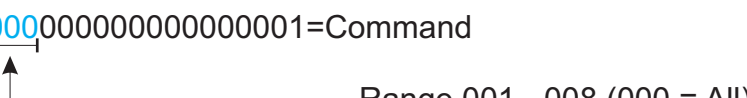
Parameter 4 specifies the Minutes.

50000000000000000000000000000001=Command

 Range 000 - 059

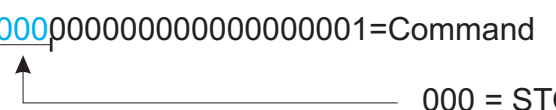
Parameter 3 specifies the Hours.

50000000000000000000000000000001=Command

 Range 000 - 023 (24 = constantly on)

Parameter 2 specifies the Relay number.

50000000000000000000000000000001=Command

 Range 001 - 008 (000 = All)

Parameter 1 specifies the Function.

50000000000000000000000000000001=Command


- 000 = STOP
- 001 = UP, use RELAY 208 's parameters
- 002 = UP, use command 500's parameters (above)
- 003 = DOWN, use RELAY 208 's parameters
- 004 = DOWN, use command 500's parameters (above)

