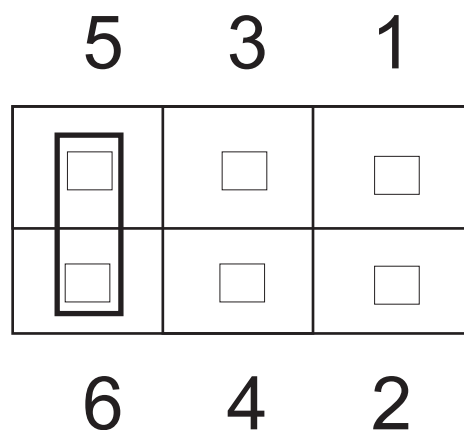


LinTronic

Reset procedure for BootLoad of new firmware



USB CABLES SHUTTING DOWN

We have experienced that some computers close down their USB ports, when we remove power to the TT455-RT or RELAY 208 in order to Bootload new firmware.

There is absolutely no logical reason as to why they should close down.

This work around will allow you to BootLoad new firmware without the USB port closing down.

1. Open the TT455-RT-238 or the RELAY 208
2. Connect USB cable and power
3. Start up the BootLoad program ready to transfer new firmware

Select firmware and click here

DO **NOT** REMOVE POWER AND RE-APPLY

4. Connect pin 5 and 6 on the internal 6-pin connector

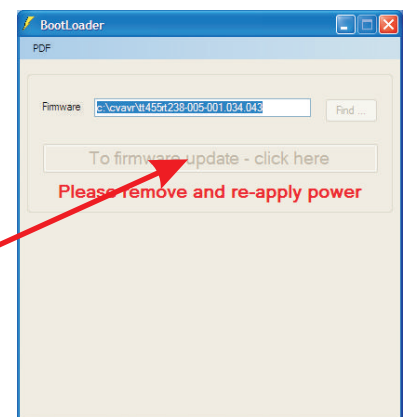
NOTE:

It is best to use a jumper. If you by accident drop it, it will make no damage to the circuit board.

If you use small screwdriver, pay attention that you only touch pin 5 and 6 and nothing else.

5. The TT455-RT-238 / RELAY 208 will reset and start BootLoading.

Let it finish, then remove power and USB cable and assemble the housing.



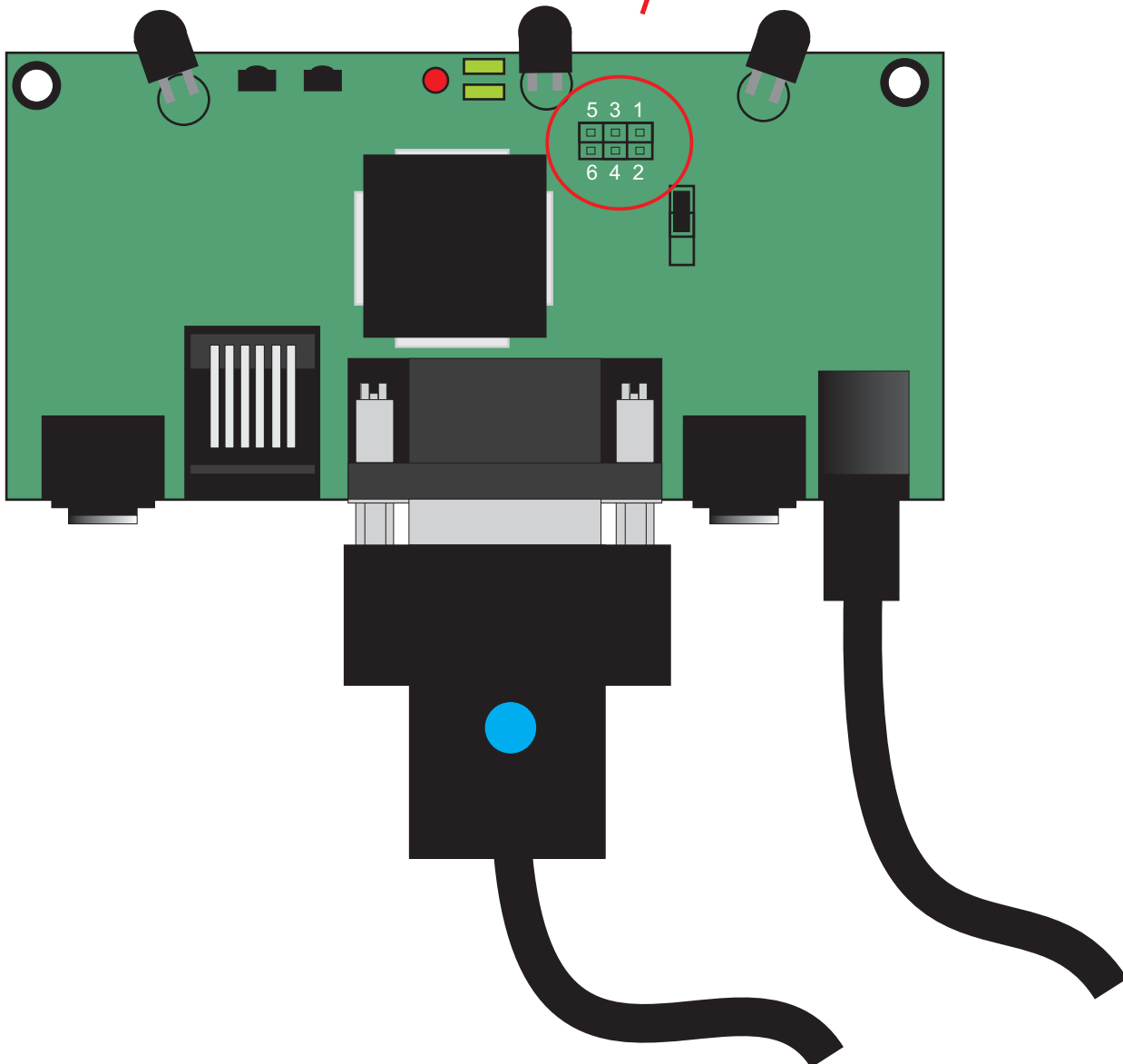
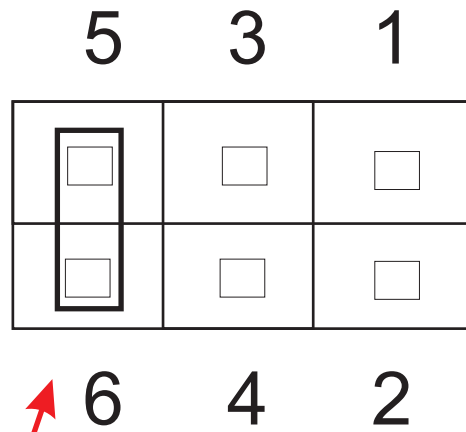
TT455-RT-238

CAREFUL !

Leave the unit powered and with the USB cable inserted.

Insert a jumper and remove it - or use a small screwdriver to connect pin 5 and 6 shortly.

See next page.



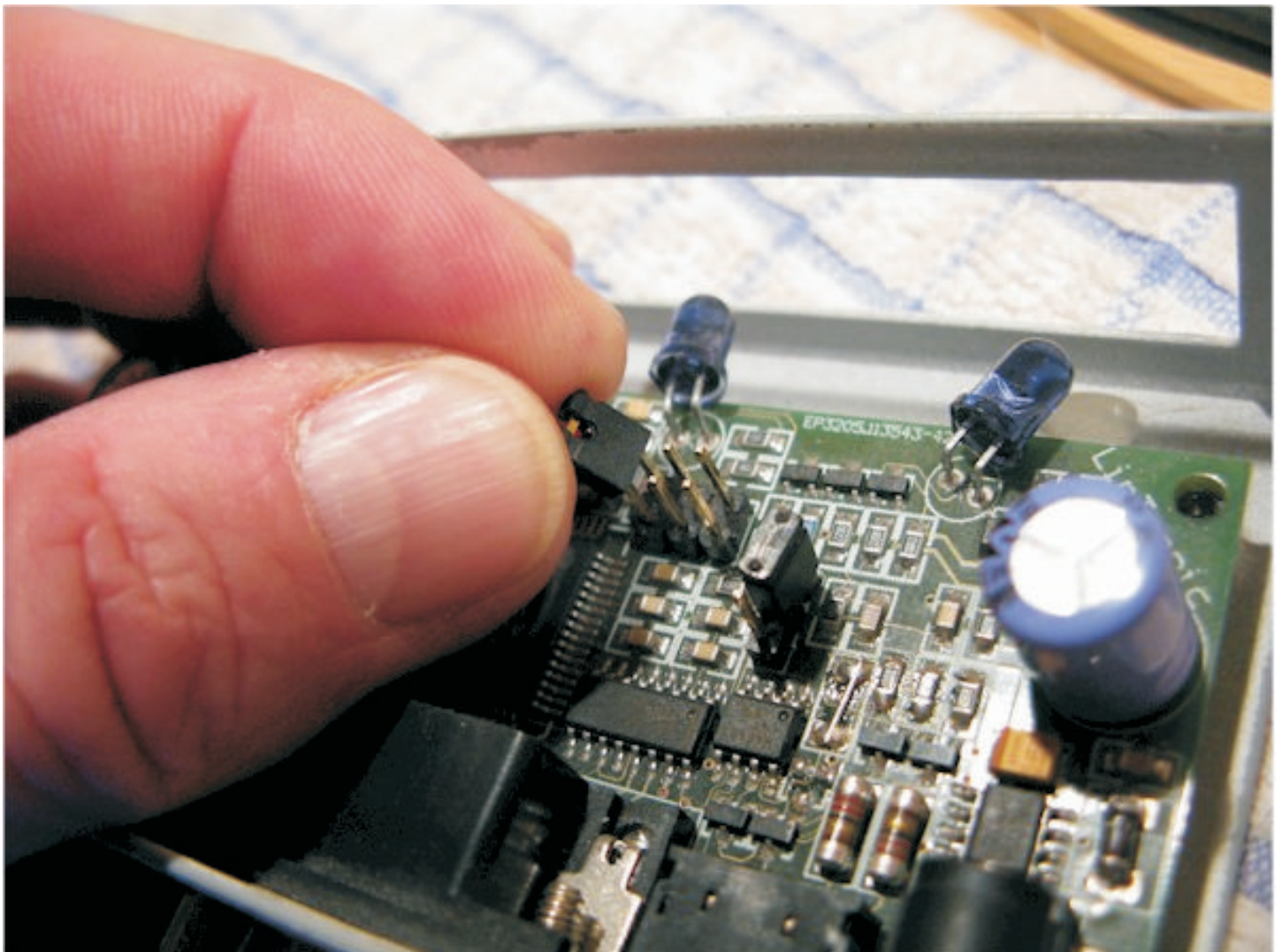
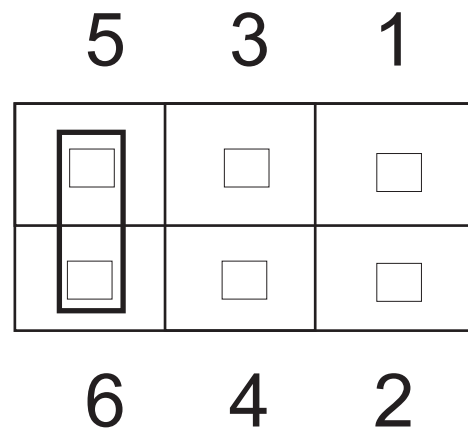
TT455-RT-238

CAREFUL !

Leave the unit powered and with the USB cable inserted.

Insert a jumper and remove it - or use a small screwdriver to connect pin 5 and 6 shortly.

Jumper - as shown - is recommended.



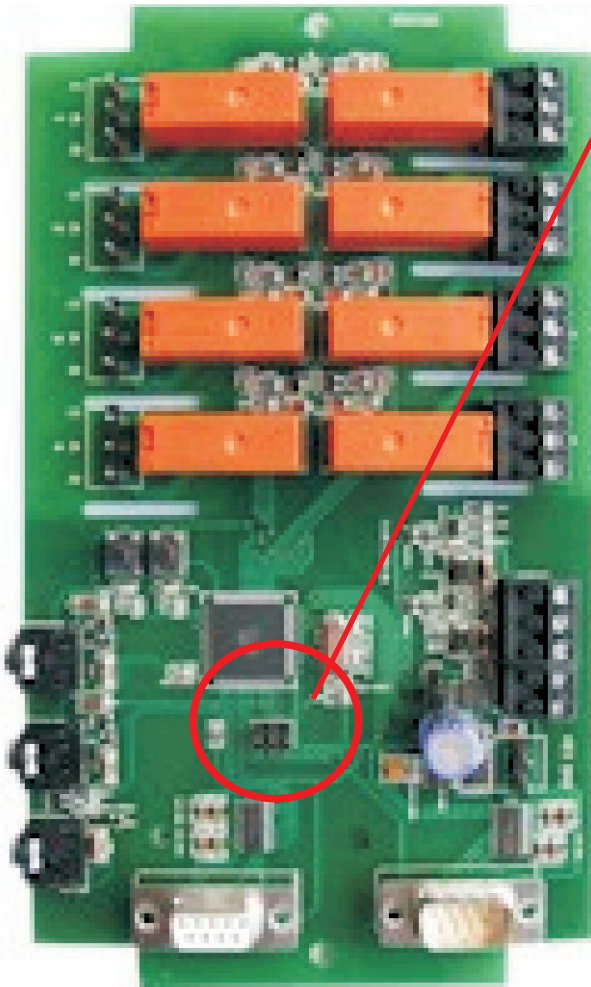
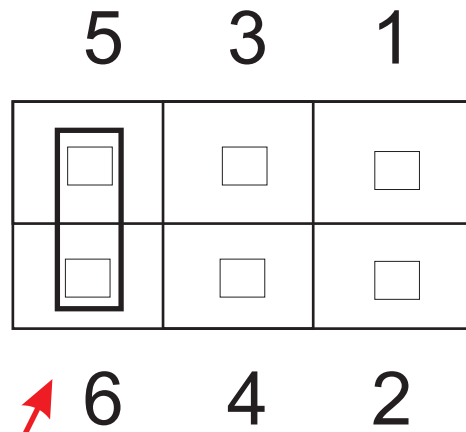
RELAY 208

CAREFUL !

Leave the unit powered and with the USB cable inserted.

Insert a jumper and remove it - or use a small screwdriver to connect pin 5 and 6 shortly.

See next page.



RELAY 208

CAREFUL !

Leave the unit powered and with the USB cable inserted.

Insert a jumper and remove it - or use a small screwdriver to connect pin 5 and 6 shortly.

Jumper - as shown - is recommended.

