

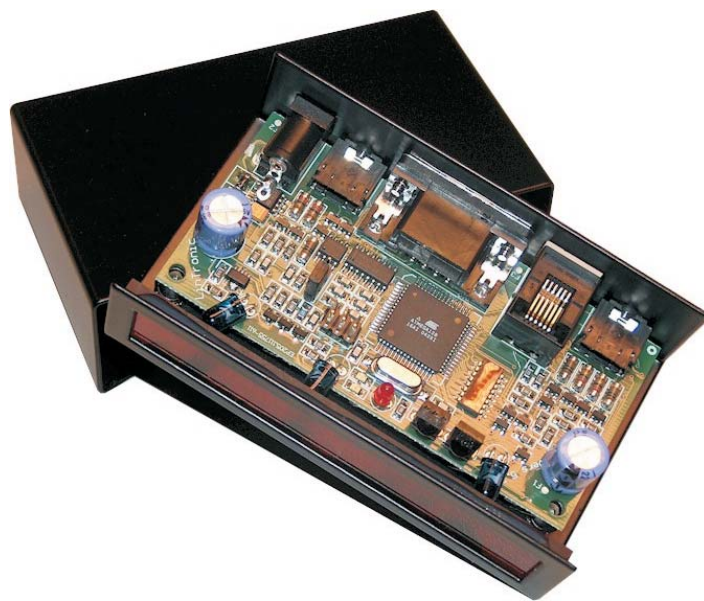
# LinTronic

<http://www.lintronic.dk>

## TableTop series

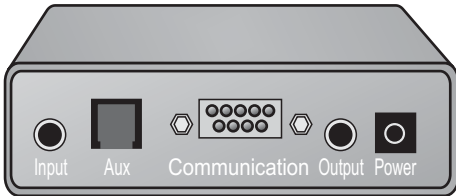
Multiple input scanning and relay control

ICPDAS



**Please observe:**  
TableTop must be jumpered for RS485 communication.

### TT455-RT-238

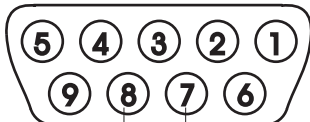


By means of CodeSet 744 (HomeAutomation, ICP, Adr. x) the TT455-RT-238 can control the digital outputs/relays on the 7000-series modules from www.icpdas.com.

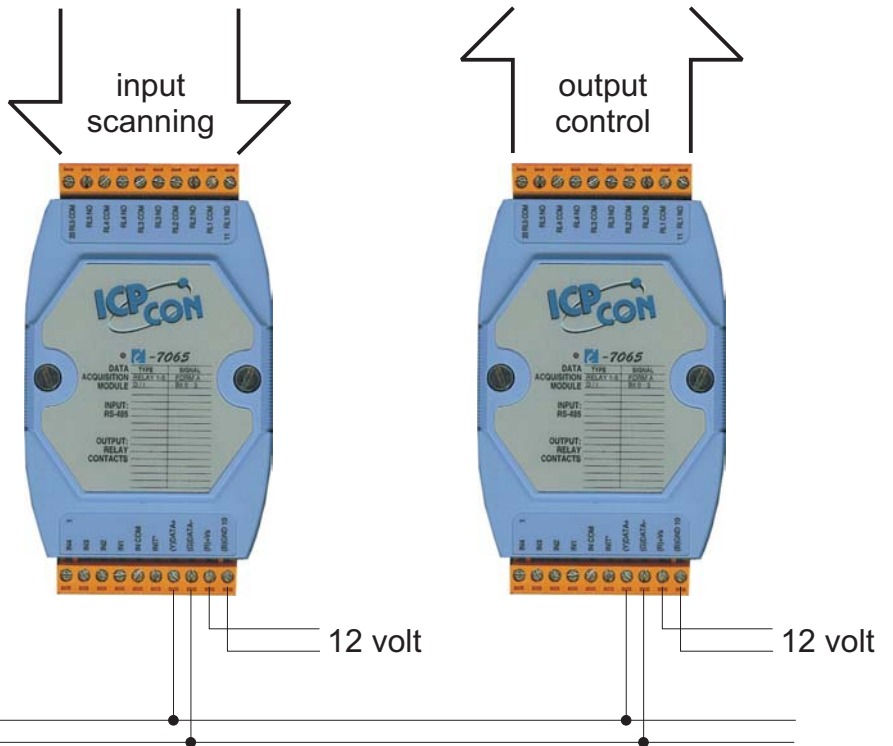
It will control up to 8 digital outputs/relays on each of the 255 addresses, giving a total of up to 2.040 outputs/relays.

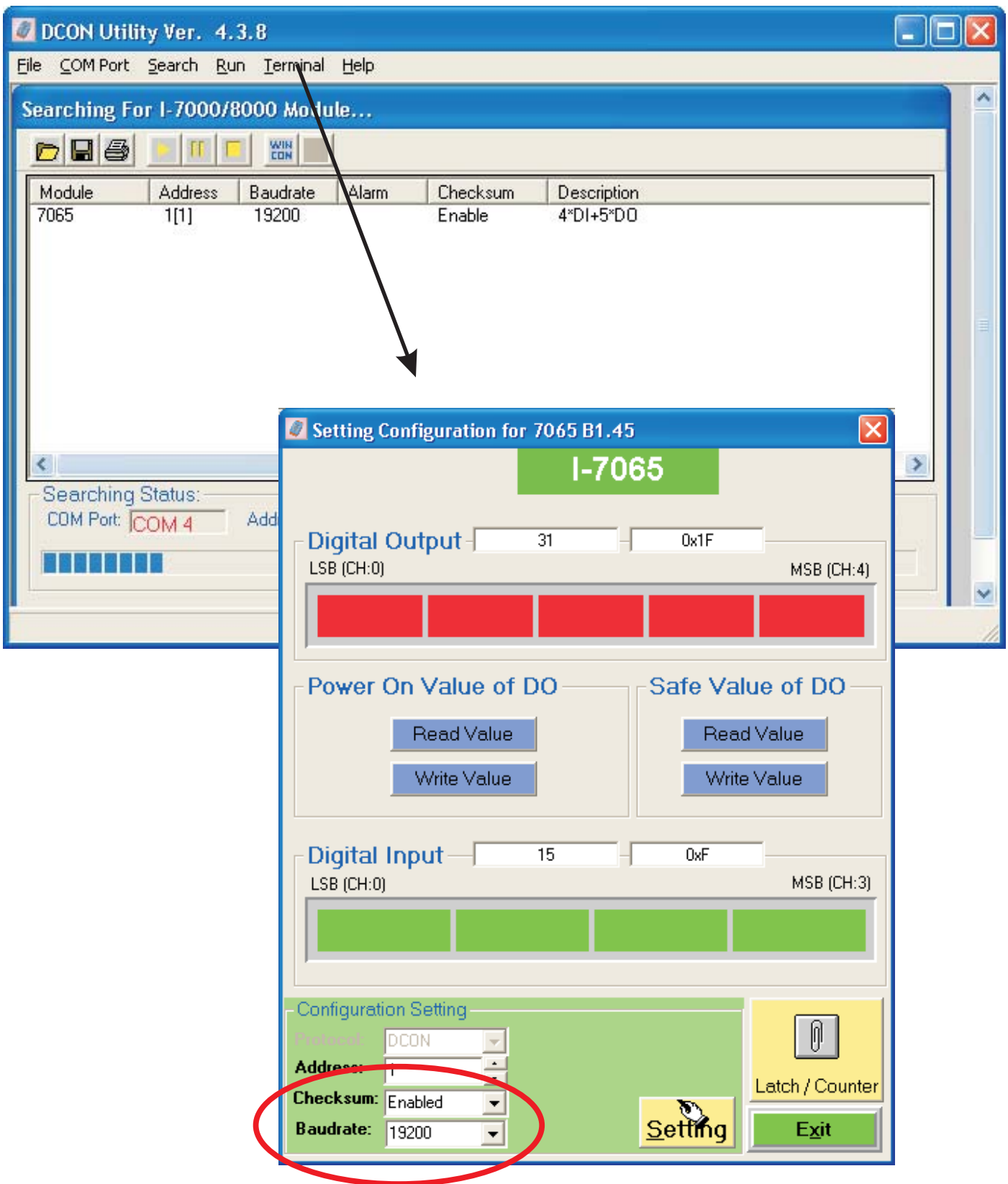
In addition - if enabled in the software - the TT455-RT-238 will scan the On/Off status of up to 8 digital inputs on the first 16 addresses, giving a total of 128 inputs.

**Please observe** that the ICP modules will work on the TT455-RT-238's baudrate (default 19.200 bps) and checksum must be enabled. Put the module in INIT mode, and use the ICP DCON utility program to set the baudrate and enable checksum.

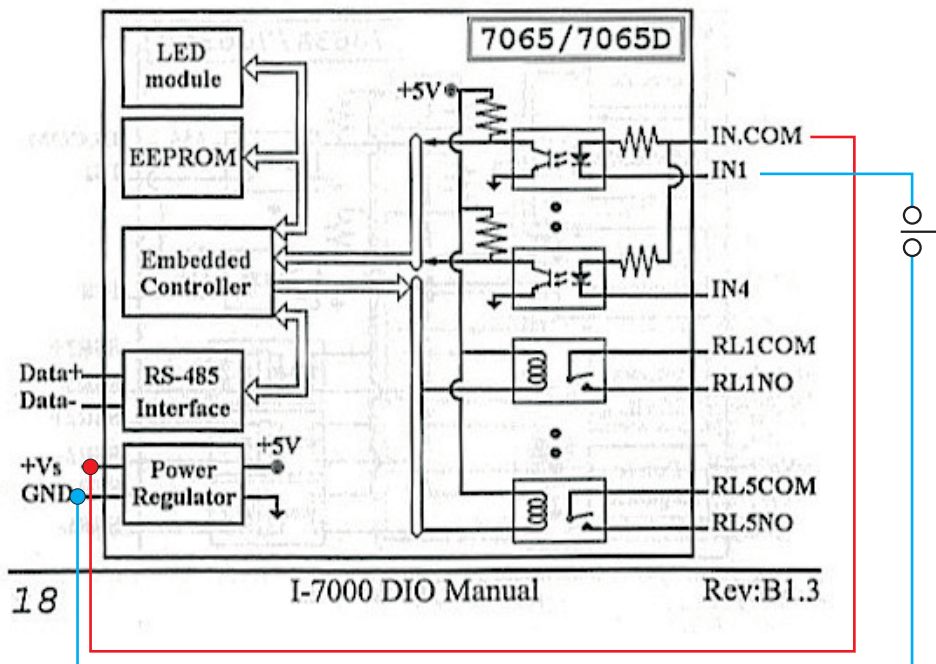
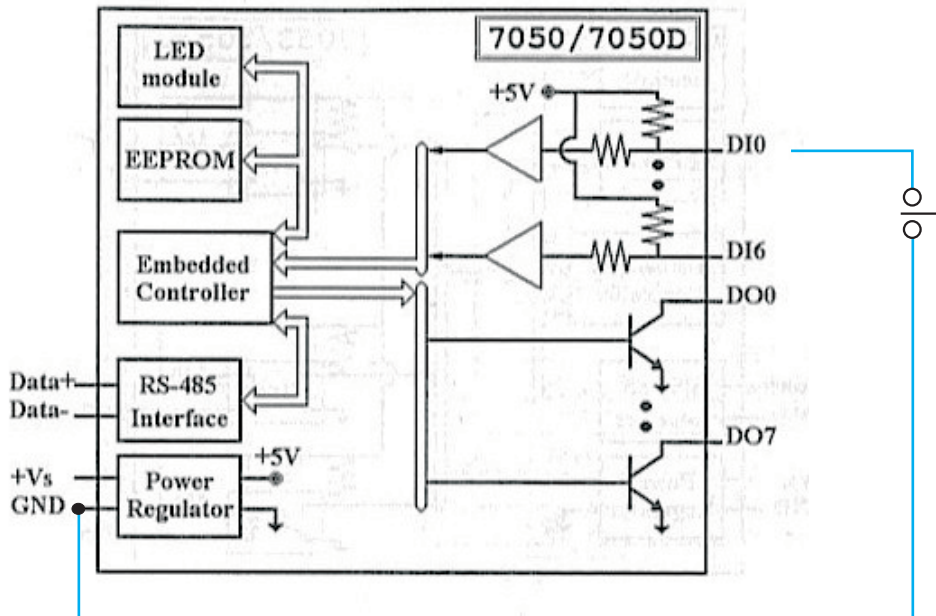


Data-      Data+





# ICP modules, input example



18

I-7000 DIO Manual

Rev:B1.3

# ICP modules, output example

## Controlling 24 volt motor

