

# LinTronic

## TT455-RT-238 Pulsing output

Updated 180903



# LinTronic

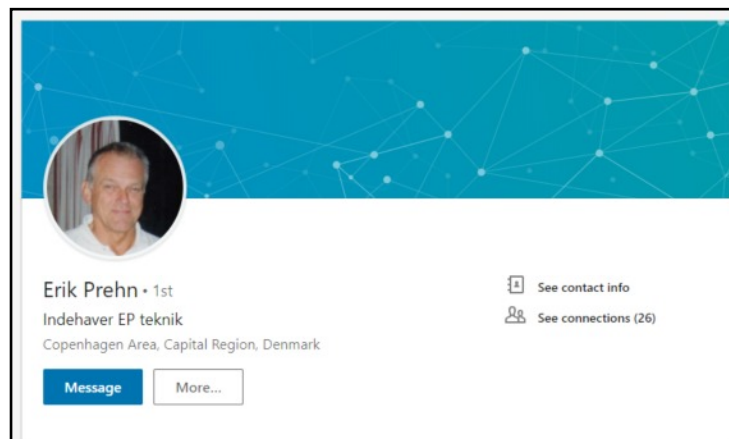
## Pulsing output control



Erik has designed a small interface box that allows a Panasonic TV to rotate on a Bang&Olufsen turning tv-stand, controlled by our TT455-RT-238.

We added a new function that optionally turns the digital output 2 into a pulsing signal, where you individually can adjust the timelength of the pulse and the pause.

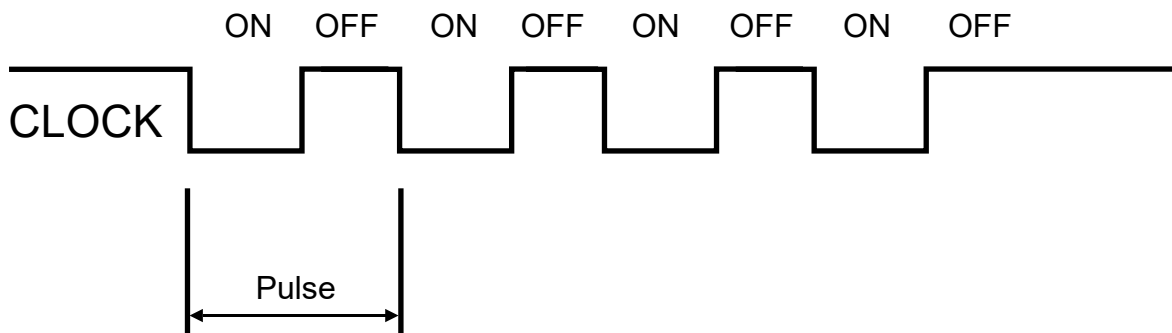
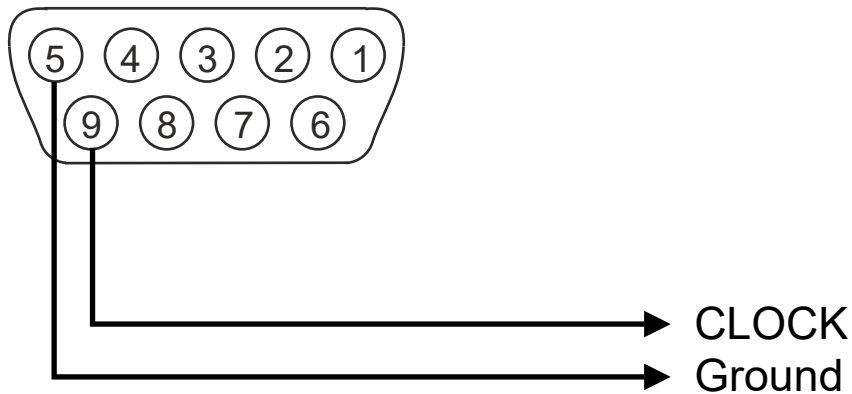
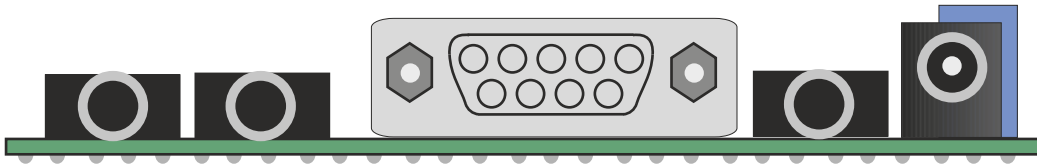
Feel free to contact Erik if you want to know more.



<https://www.linkedin.com/in/erik-prehn-1097b657/>

# LinTronic

## Pulsing output control



1 Pulse = 1 x ON + 1 x OFF

ON timing range: 50 to 65.535 microseconds

OFF timing range: 50 to 65.535 microseconds

ON / OFF timing =  $px1 * 256 + px2$

See next page.

# LinTronic

## Pulsing output control

Action command:

```
id  pa1 pa2 pa3 pa4 pa5 pa6 rpt
769 020 vvv pu1 pu2 pa1 pa2 001
```

769 programmable function  
020 product id (Bang&Olufsen turning tv stand)  
vvv version, range: 001 - 255  
pu1 On time1, range: 000 - 255  
pu2 On time2, range: 000 - 255  
pa1 Off time1, range: 000 - 255  
pa2 Off time2, range: 000 - 255  
rpt Number of pulses, range: 000 - 255

For version 001:

ON time  $pu1 * 256 + pu2$  (range: 50 to 65.535 microseconds)  
Off time  $pa1 * 256 + pa2$  (range: 50 to 65.535 microseconds)

Example: 50 pulses at 200 Hz

200 Hz = periode of 0,005 sec (5.000 microseconds)

At 50% duty-cycle On and Off are both 2.500 microseconds

$px1 = 2500 / 256 = 9$

$px2 = 2500 - (9 * 256) = 196$

pu1 = 009 and pa1 = 009

pu2 = 196 and pa2 = 196

rpt = 050



# LinTronic

## Pulsing output control

Action command:

```
id  pa1 pa2 pa3 pa4 pa5 pa6 rpt  
769 020 001 009 196 009 196 050
```

Example: 50 pulses at 200 Hz

200 Hz = periode of 0,005 sec (5.000 microseconds)

At 50% duty-cycle On and Off are both 2.500 microseconds

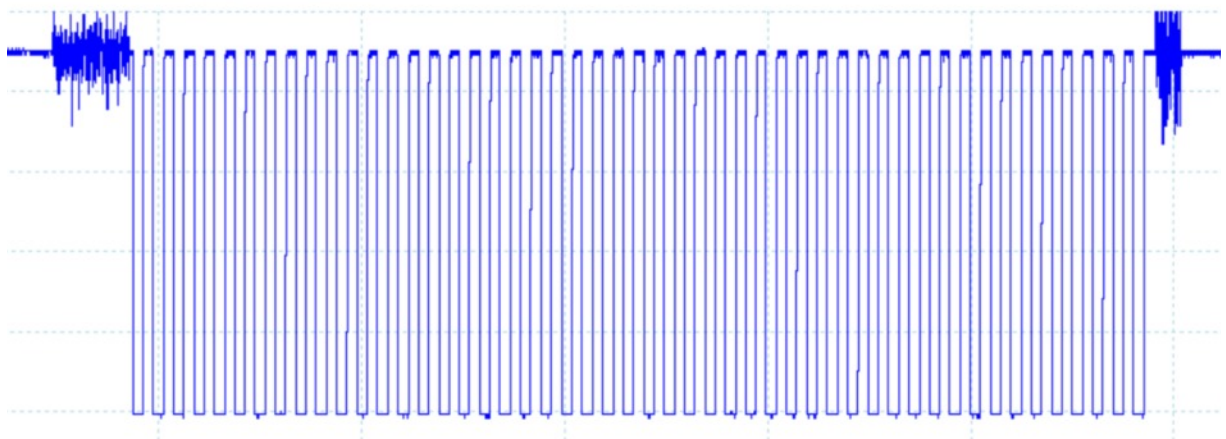
$px1 = 2500 / 256 = 9$

$px2 = 2500 - (9 * 256) = 196$

pu1 = 009 and pa1 = 009

pu2 = 196 and pa2 = 196

rpt = 050



# LinTronic

## Pulsing output control

Please see the technical manual for the  
TT455-RT-238 HARDWARE 6.1

if you want to activate the pull-up resistor for the digital output.

