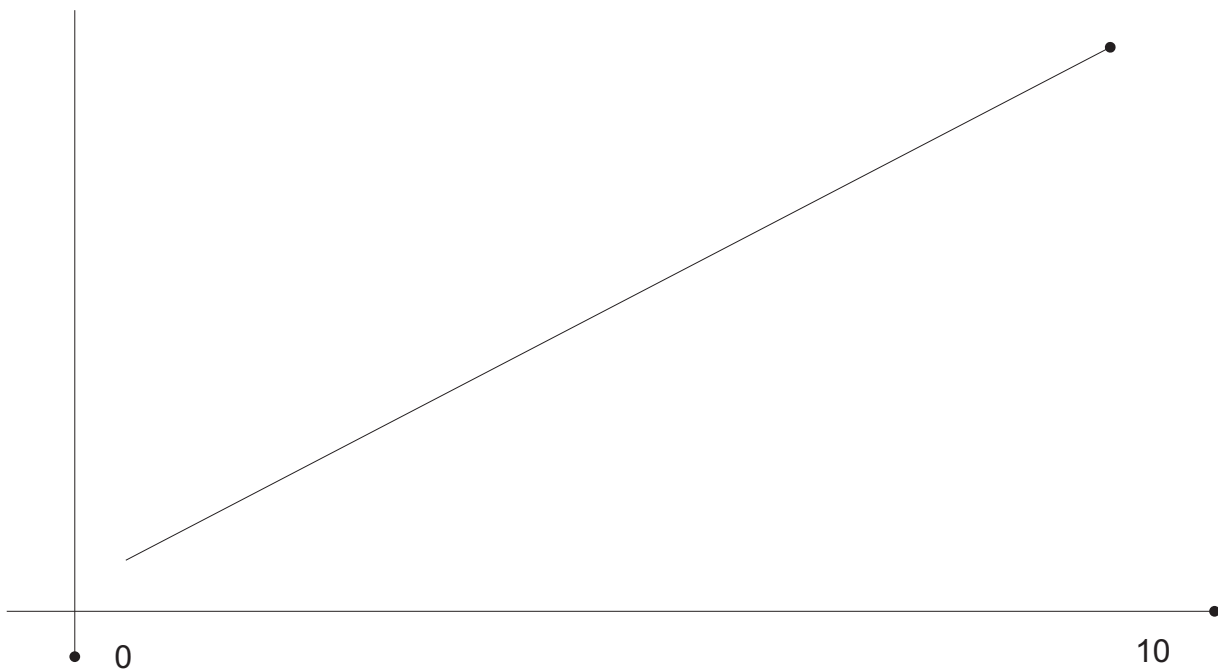


LinTronic

<http://www.lintronic.dk>

CONTROL OF 0 - 10 VOLT OUTPUT



FOREWORD

Some lightdimmers and fireplaces can be controlled by an analog signal between 0 to 10 volt.

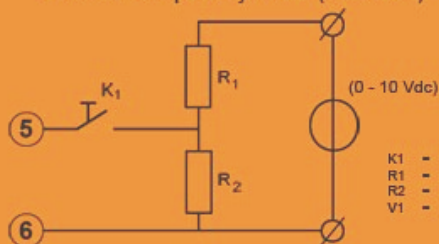
In order to control an analog 0 - 10 volt signal, we can control for example an ICPDAS RS485 to analog converter.

BIKO extern bedienings mogelijkheden

Externe ruimte voelen

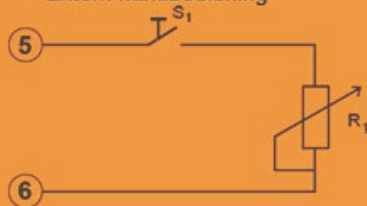


Externe computersysteem (domotica)

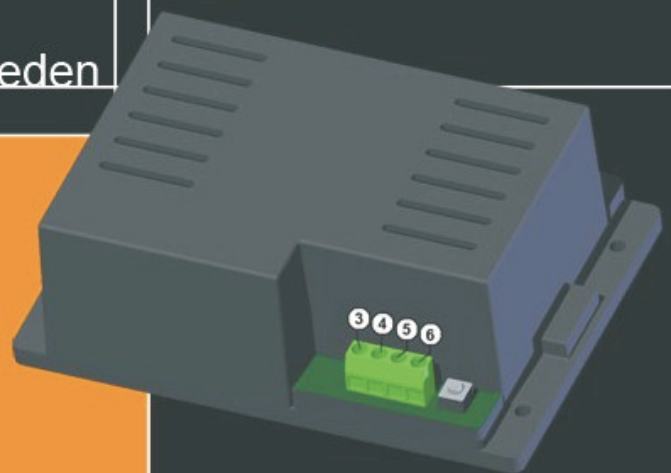


- K1 = Relaiscontact (domotica)
- R1 = ± 1770 Ω
- R2 = ± 500 Ω
- V1 = Externe spanningsbron (van bv. domotica) regelbaar van 0 - 10V voor hoog/ laag -regelen vlammen.

Extern handbediening



- S1 = Handbediend starten haard: schakelaar.
- R1 = Regelbare weerstand van 10kΩ



ICPDAS 7021, 0 to 10 volt output

See ICPDAS manual for 7021 to understand the below:

Establish connection with the 7021.

For example by using LinTronic SETUP program, a computer and and RS232 to RS485 converter.

Checking configuration of ICPDAS 7021:

CALIBRATION

Send: \$012[cr] [cr] = carriage return
Response: !010320600[cr] Address 01, 0 - 10 volt type

Send: #0110.000 Set output to 10 volt, check with multimeter
Response: >[cr] OK

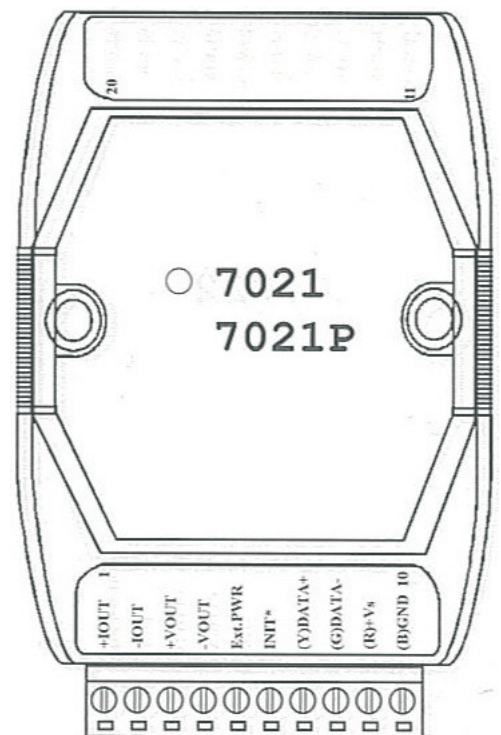
Send: \$01310 Trim up, 40 mv (40 mv / 2.44 mv = 16)
Response: !01[cr] OK

Send: \$017 Calibration command
Response: !01[cr] OK

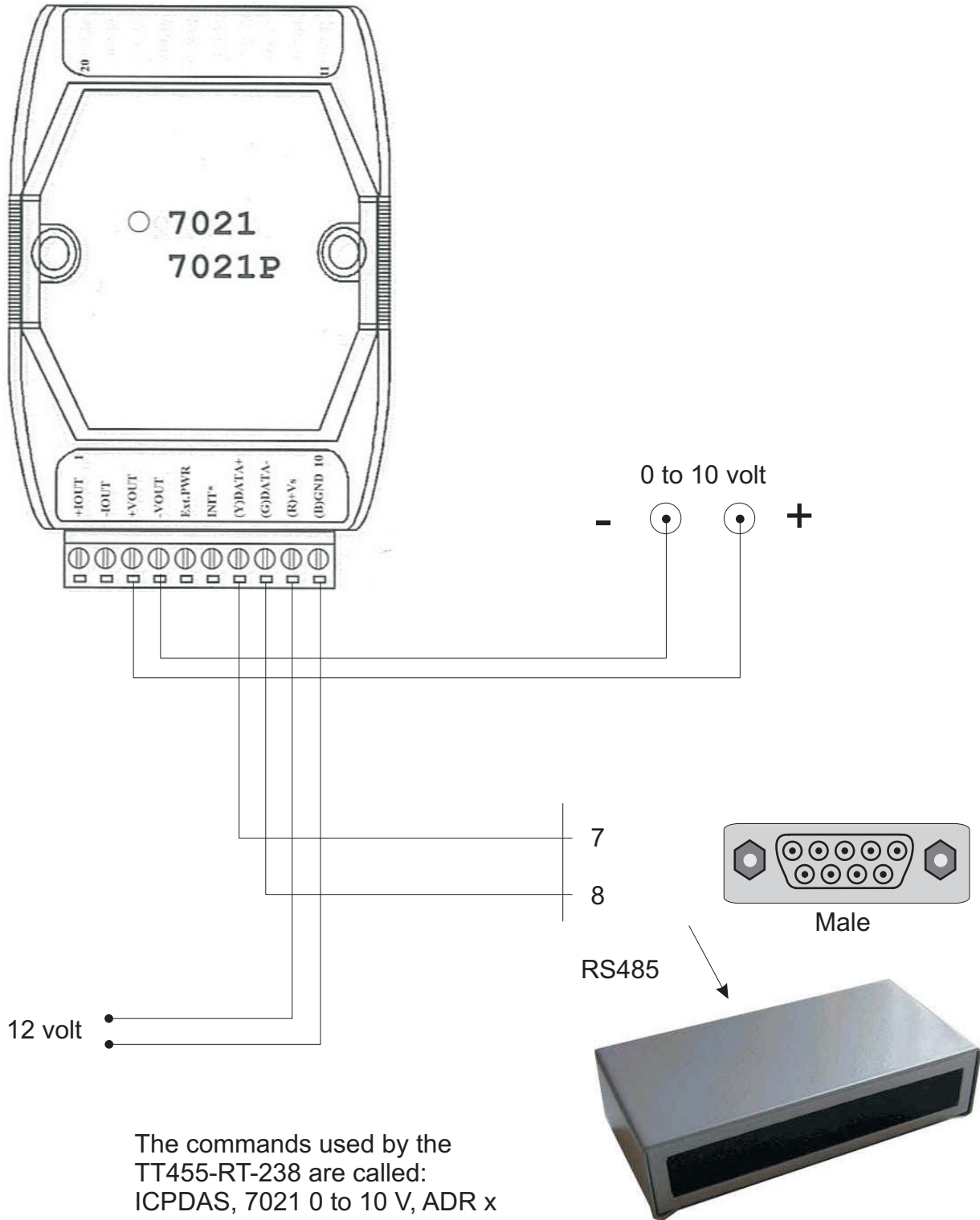
CHECK FUNCTIONALITY

Send: #0105.150 Set output to 5.15 volt
Response: >[cr] OK

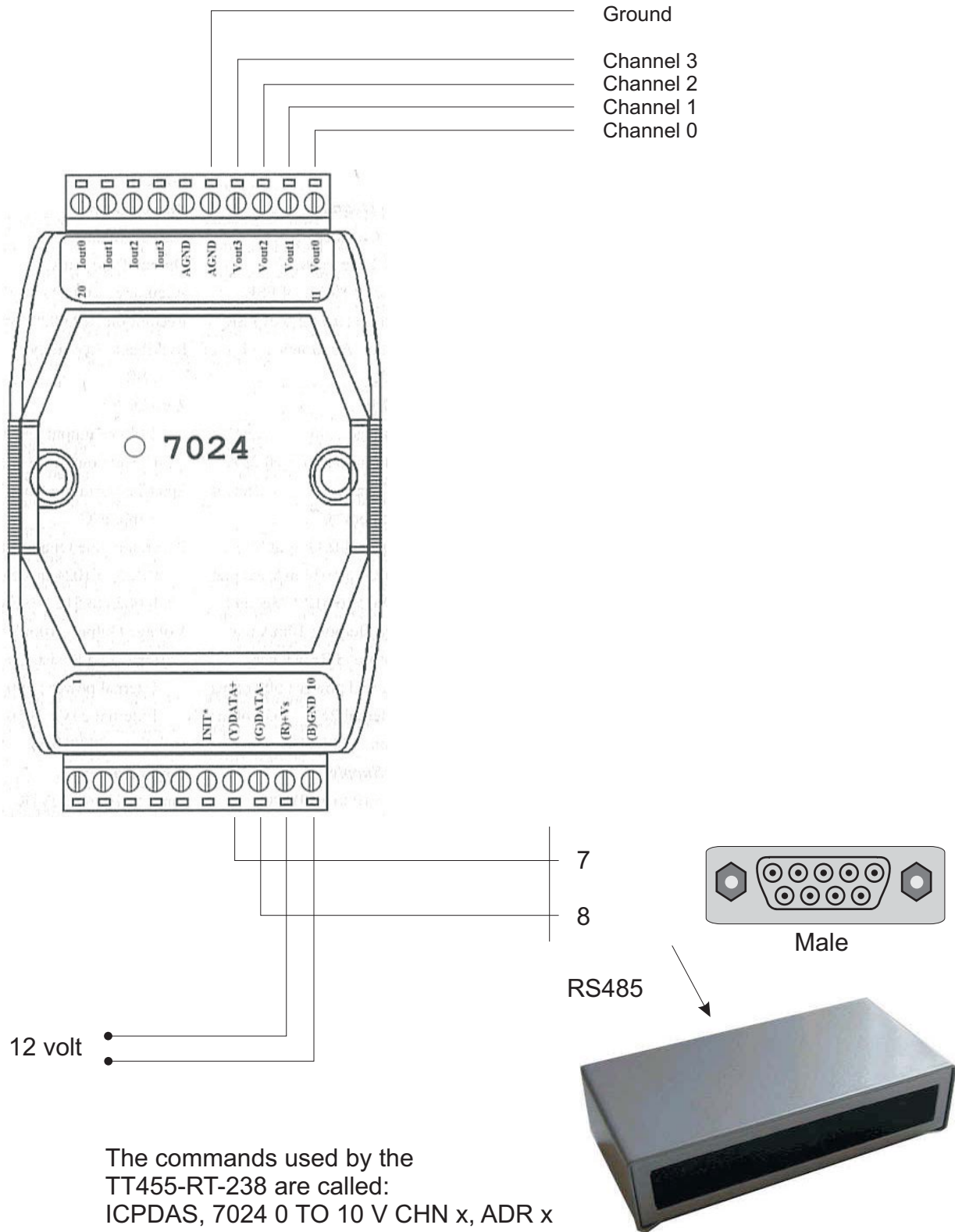
If you control the 7021 by a LinTronic TT455-RT-238, then make sure you use the ICPDAS program to make 7021 work with checksum.



ICPDAS 7021, 0 to 10 volt output, 1 channel



ICPDAS 7024, 0 to 10 volt output, 4 channels



The commands used by the TT455-RT-238 are called:
ICPDAS, 7024 0 TO 10 V CHN x, ADR x